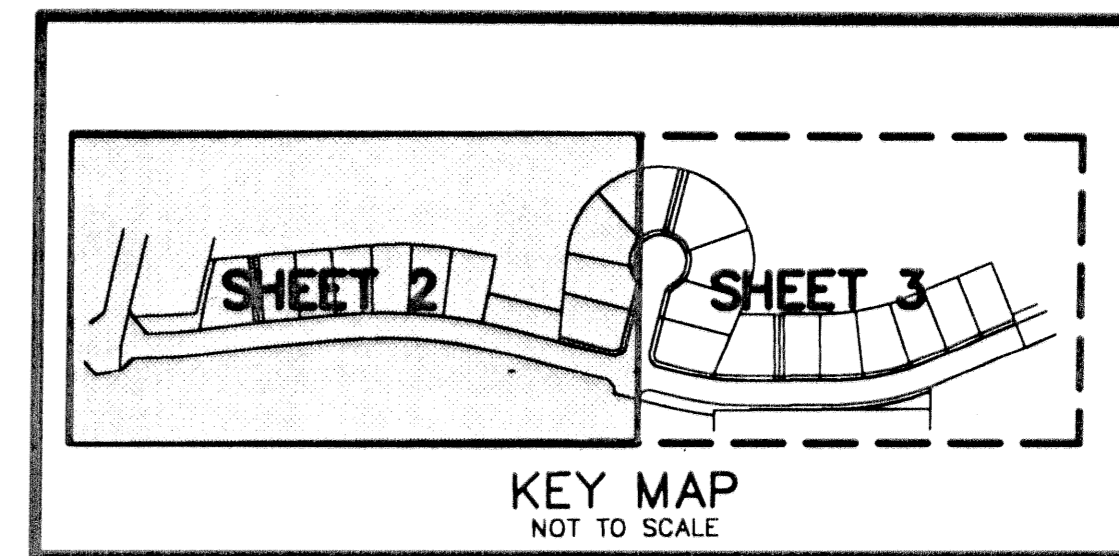


OAKS AT BOCA RATON PLAT TWO

A PLANNED UNIT DEVELOPMENT BEING A PART OF RAINBOW PUD
 BEING A REPLAT OF A PORTION OF TRACT C, "OAKS AT BOCA RATON PLAT ONE",
 AS RECORDED IN PLAT BOOK 95, PAGES 16 THROUGH 22 OF THE PUBLIC RECORDS OF PALM BEACH
 COUNTY, FLORIDA, LYING IN SECTION 31, TOWNSHIP 46 SOUTH, RANGE 42 EAST, PALM BEACH COUNTY, FLORIDA

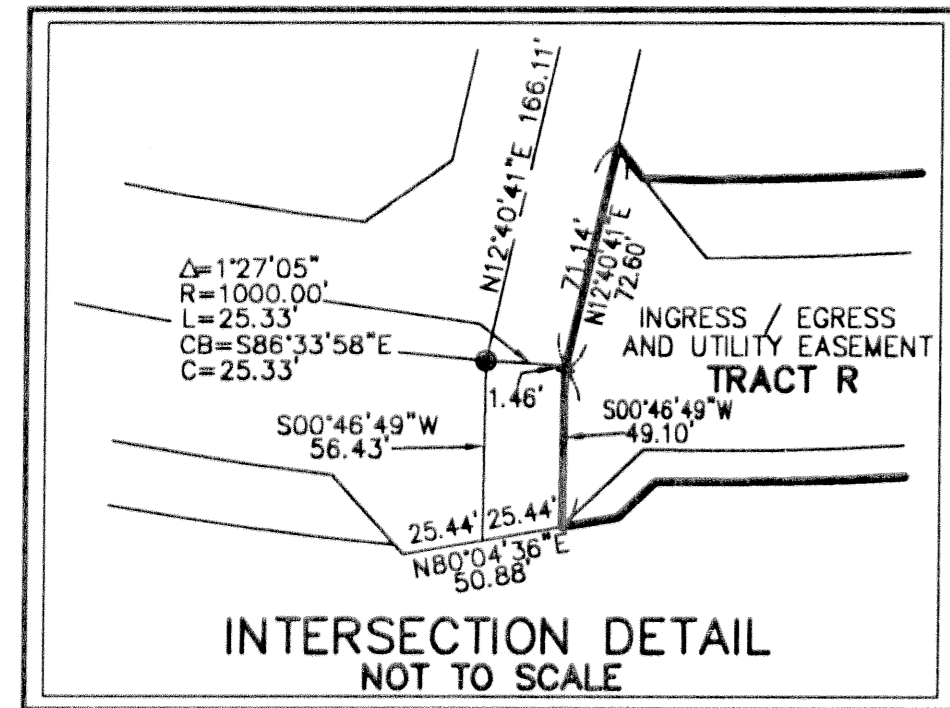
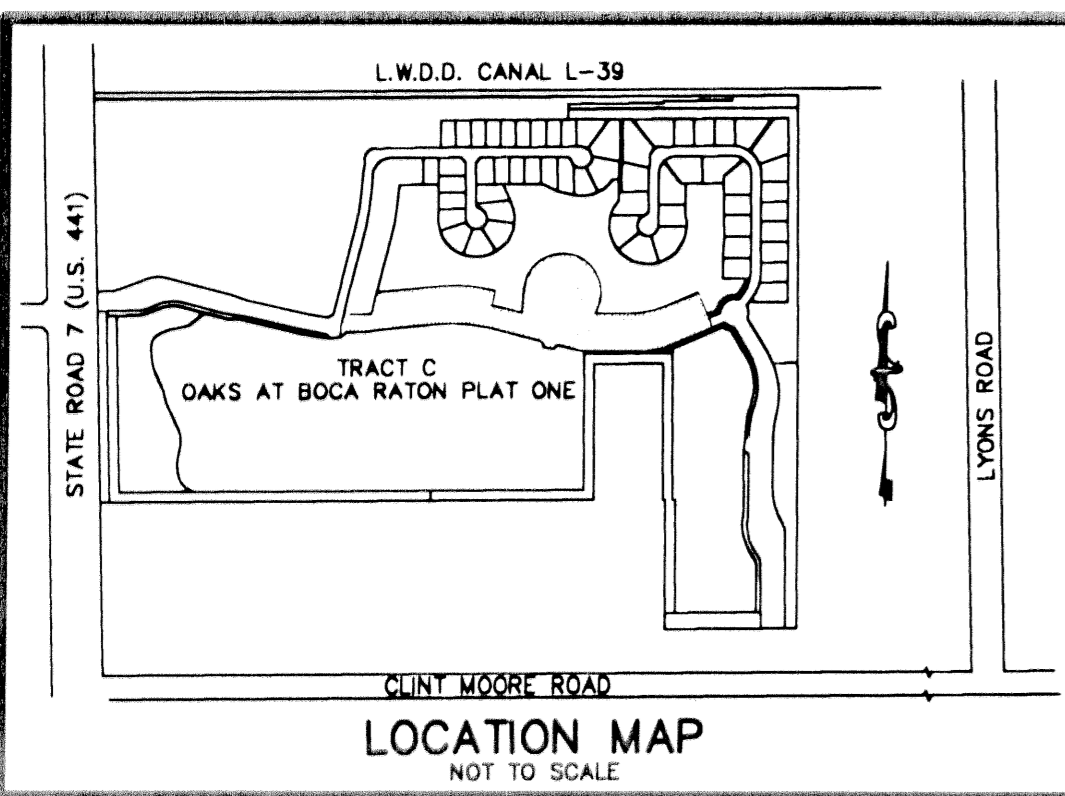
THIS INSTRUMENT PREPARED BY
 DAVID P. LINDLEY
 OF
 CAULFIELD and WHEELER, INC.
 SURVEYORS - ENGINEERS - PLANNERS
 7301-A WEST PALMETTO PARK ROAD, SUITE 100A
 BOCA RATON, FLORIDA 33433 - (561)392-1991
 JUNE - 2002



STATE OF FLORIDA
 COUNTY OF PALM BEACH
 THIS PLAT WAS FILED FOR
 RECORD AT _____ M.
 THIS _____ DAY OF _____
 A.D. 2002 AND DULY RECORDED
 IN PLAT BOOK _____ ON
 PAGES _____ AND _____
 DOROTHY H. WILKEN
 CLERK CIRCUIT COURT

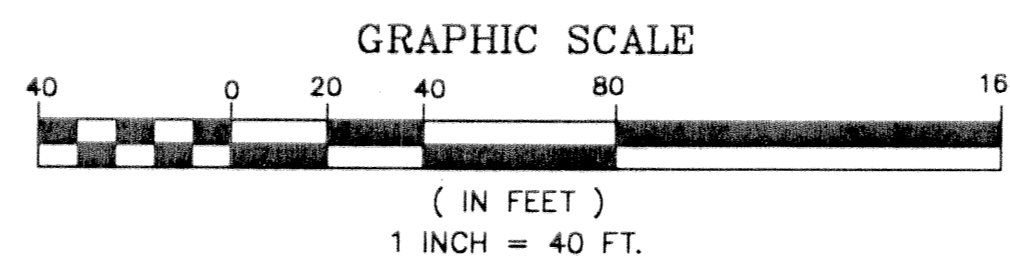
BY: _____
 DEPUTY CLERK

SHEET 2 OF 3



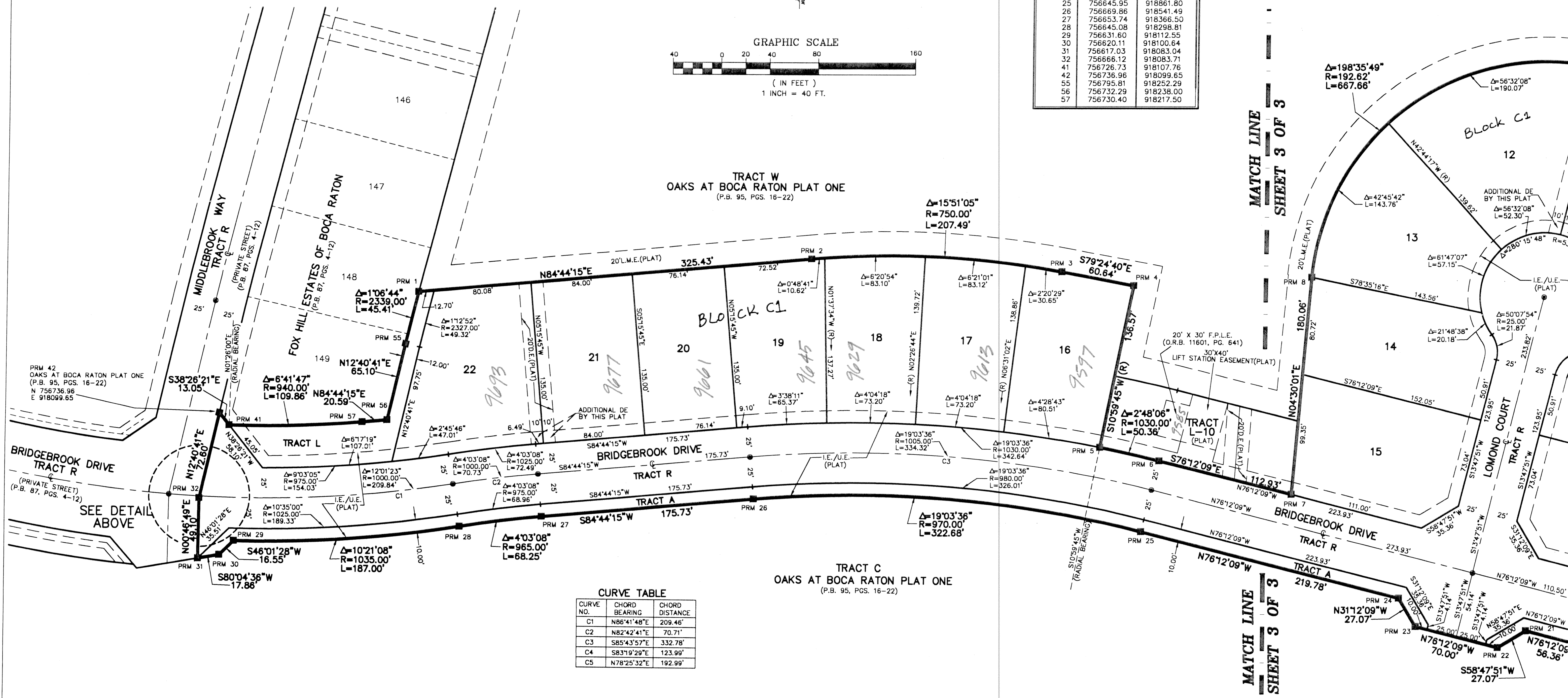
NOTES COORDINATES, BEARINGS AND DISTANCES

COORDINATES SHOWN ARE GRID
 DATUM = NAD 83 1990 ADJUSTMENT
 ZONE = FLORIDA EAST
 LINEAR UNIT = US SURVEY FEET
 COORDINATE SYSTEM 1983 STATE PLANE
 TRANSVERSE MERCATOR PROJECTION
 ALL DISTANCES ARE GROUND
 SCALE FACTOR = 1.00002099
 GROUND DISTANCE X SCALE FACTOR = GRID DISTANCE
 BEARINGS AS SHOWN HEREON ARE GRID DATUM, NAD 83 1990
 ADJUSTMENT, FLORIDA EAST ZONE.



COORDINATE TABLE

P.R.M.#	NORTHING	EASTING
1	756840.01	918262.68
2	756889.85	918586.75
3	756860.24	918793.36
4	756849.10	918852.98
5	756715.04	918826.93
6	756704.22	918876.11
7	756677.29	918985.78
8	756856.80	918999.91
9	756766.13	919369.12
10	756733.77	919355.32
11	756735.10	919525.95
12	756773.82	919715.02
13	756839.64	919872.36
14	756668.97	919943.76
15	756591.00	919757.39
16	756588.16	919750.46
17	756577.43	919750.54
18	756540.35	919558.94
19	756538.85	919366.91
20	756554.27	919235.15
21	756567.71	919180.41
22	756553.69	919157.25
23	756570.38	919089.27
24	756593.54	919075.25
25	756645.95	918861.80
26	756669.86	918541.49
27	756653.74	918366.50
28	756645.08	918298.81
29	756631.60	918112.55
30	756620.11	918100.64
31	756617.03	918083.04
32	756666.12	918083.71
41	756726.73	918107.76
42	756736.96	918099.65
55	756795.81	918252.29
56	756732.29	918238.00
57	756730.40	918217.50



CURVE TABLE

CURVE NO.	CHORD BEARING	CHORD DISTANCE
C1	N86°41'48"E	209.46'
C2	N82°42'41"E	70.71'
C3	S85°43'57"E	332.78'
C4	S83°19'29"E	123.99'
C5	N78°25'32"E	192.99'

SUBDIVISION OAKS AT BOCA RATON PL 2
 BOOK 95 PAGE 197
 FLOOD ZONE FLOOD MAP # 219A
 QUID # 9L ZONING AGR
 SE ZIP CODE 33416
 TAZ 880 PUD NAME RAINBOW